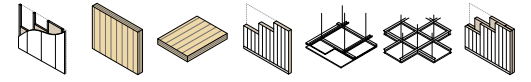


## FIRESTOP COLLAR FOR MECHANICAL AND ELECTRICAL TECHNICAL PENETRATIONS

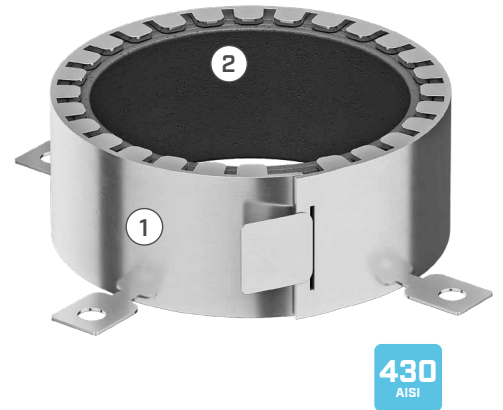


### FAST

It can be applied to penetrations of specific types and diameters. Quick and easy installation.

### VERSATILE PROTECTION

The outer stainless steel structure allows its application in wet environments, and the highly expansive intumescent strip ensures protection for large-sized elements.

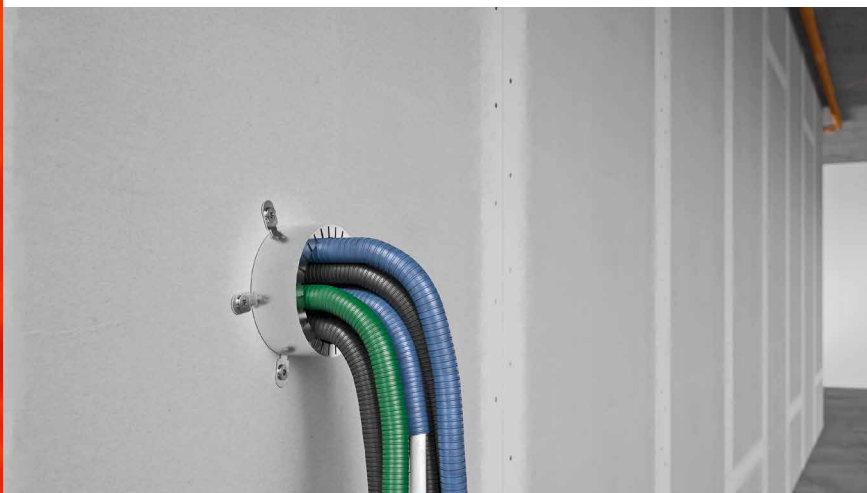


### COMPOSITION

- ① AISI 430 stainless steel (1.4016)
- ② highly expansive "Firefill" intumescent material

### CODES AND DIMENSIONS

CODE	internal diameter	height	fastening points [no.]	internal diameter	height	
	[mm]	[mm]		[mm]	[mm]	
COLLUM30	30	50	4	1 3/16	2	60
COLLUM63	63	50	4	2 1/2	2	20
COLLUM80	80	50	4	3 1/8	2	16
COLLUM90	90	50	4	3 1/2	2	16
COLLUM100	100	50	4	4	2	8
COLLUM110	110	50	4	4 3/8	2	8
COLLUM125	125	70	4	4 15/16	2 3/4	4
COLLUM140	140	70	4	5 1/2	2 3/4	3
COLLUM160	160	70	4	6 1/4	2 3/4	3
COLLUM315	315	200	4	12 3/8	8	1



### VERSATILE

Ideal for defined diameters. Easy to apply in new and existing installations.

### REUSEABLE

Easily removed and reused.

## TECHNICAL DATA

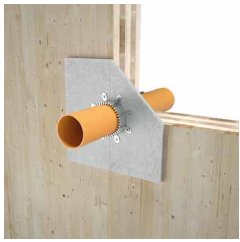

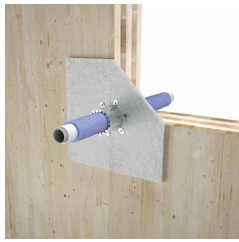






Properties	value	USC units
Free expansion	> 20:1	-
Activation temperature	180 °C	356 °F
Fire resistance rating on CLT wall/floor <sup>(1)</sup>	EI120	-

<sup>(1)</sup>EN 1366-3 standard. For full details and tested configurations, please refer to the manual or contact our technical department for updates on new tests. The product remains stable when stored under normal conditions.

♻️ Waste classification (2014/955/EU): 19 10 01 (foil) | 07 02 13 (sheath).

## FIELDS OF APPLICATION

### PLUMBING

	combustible	insulated combustible	insulated multilayer	steel insulated
flush wall pipes				
non-flush wall pipes		-	-	-
flush floor pipes				
non-flush floor pipes		-	-	-

### ELECTRICAL and TELECOMMUNICATIONS

	in-wall wiring	in-floor wiring
flush combustible pipes		