

# MULTI BAND

## SPECIAL HIGH-ADHESION TAPE, CAN BE PLASTERED

### EXCELLENT ADHESION

Its excellent adhesion makes it ideal for application on most surfaces, even at low temperatures.

### CAN BE PLASTERED

Technical fabric perfect for subsequent plastering, ensuring excellent visual appeal by allowing the tape to be concealed behind claddings and plaster.

D

DIN 4108-7



CAN BE PLASTERED



HIGH STABILITY

## COMPOSITION

- ① support: breathable 2-layer PP membrane
- ② adhesive: acrylic dispersion without solvents
- ③ release liner: silicone coated paper



## TECHNICAL DATA

Properties	standard	value	USC units
Thickness	-	0,6 mm	24 mil
Tensile strength	EN ISO 29864	44,0 N/10 mm	25.1 lbf/in
Adhesion strength on OSB at 90° after 10 minutes	EN 29862	5,0 N/10 mm	2.9 lbf/in
Adhesion strength on OSB at 180° after 10 minutes	EN 29862	9,0 N/10 mm	5.1 lbf/in
Adhesion strength (average) on membrane in PP after 24 hours <sup>(1)</sup>	EN 12316-2	15,0 N/50 mm	1.7 lbf/in
Shear adhesion strength of the joint on membrane in PP after 24 hours <sup>(1)</sup>	EN 12317-2	150,0 N/50 mm	17.1 lbf/in
Water vapour transmission (Sd)	EN 1931	< 1 m	> 3.5 US Perm
Application temperature <sup>(3)</sup>	-	> -10 °C	> +14 °F
Resistance to temperature	-	-40/+100 °C	-40/+212 °F
Storage temperature <sup>(3)</sup>	-	+5/+25 °C	+41/+77 °F
Solvents	-	no	-

<sup>(1)</sup>Minimum required value according to DTU 31.2 P1-2 (France): 15 N/50 mm.

<sup>(2)</sup>Minimum required value according to DTU 31.2 P1-2 (France): 40 N/50 mm.

<sup>(3)</sup> On dry support and at a temperature > 0 °C. The absence of condensation or frost on the surface must be guaranteed.

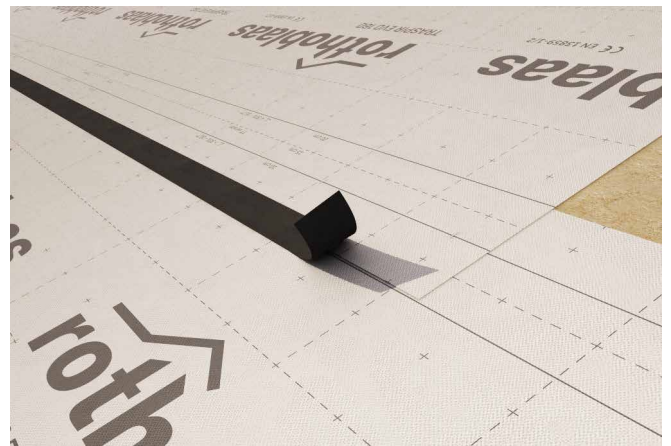
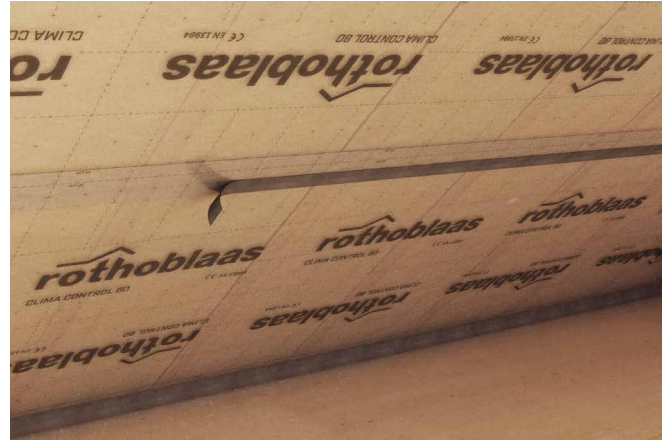
<sup>(4)</sup>Store the product in a cool, dry place for no more than 12 months.

Waste classification (2014/955/EU): 08 04 10.

## CODES AND DIMENSIONS

CODE	liner	B	L	liner	B	L	
	[mm]	[mm]	[m]	[in]	[in]	[ft]	
MULTI60	60	60	25	2.4	2.4	82	10

## ■ FIELDS OF APPLICATION



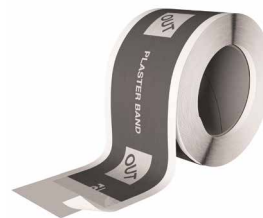
## ■ RELATED PRODUCTS



**PRIMER SPRAY**  
page 112



**PLASTER BAND IN**  
page 90



**PLASTER BAND OUT**  
page 90



**PLASTER BAND LITE**  
page 98



### UNIVERSAL

Excellent for sealing the membranes overlapping both inside and outside. Due to the black non-woven fabric support, it is not visible behind discontinuous cladding.

### SAFE

Thanks to its special composition, it prevents the uncontrolled passage of air, ensuring constantly perfect air and wind tightness.