

PROTECT

SELF-ADHESIVE BUTYL BAND, CAN BE PLASTERED

BUTYL MIX

The special mix guarantees excellent adhesion and deformation capacities, compensating for the natural movement of the timber.

LOW TEMPERATURES

The butyl guarantees excellent adhesion to the supports also under difficult environmental conditions.

COMPOSITION

- ① release liner: PP film
- ② glue: grey adhesive butyl compound
- ③ support: non-woven PP fabric

TECHNICAL DATA

Properties	standard	value	USC units
Water vapour resistance factor (μ)	EN 1931	approx. 26176	approx. 130 MN-s/g
Tensile strength MD/CD	EN 12311-1	115/100 N/50 mm	13.1/11.4 lbf/in
Elongation MD/CD	EN 12311-1	100/100 %	-
Resistance to tearing MD/CD	EN 12310	$\geq 130/\geq 125$ N	$\geq 29.23/\geq 28.10$ lbf
Vertical sliding	ISO 7390	0 mm	-
Watertightness	EN 1928	compliant	-
Reaction to fire	EN 13501-1	class E	-
Fire resistance rating on plain CLT joint (120 mm), 8 mm joint + MANICA PLASTER-PROTECT(*)	EN 1363-4	EI90	-
Adhesion strength at 180°	ASTM D 1000	22 N/10 mm	12.6 lbf/in
Joint separation resistance MD/CD	EN 12316-1	≥ 20 N/50 mm	≥ 2.28 lbf/in
Maximum tensile force MD/CD	EN 12317-1	$\geq 100/\geq 75$ N/50 mm	$\geq 11.42/\geq 8.57$ lbf/in
Initial Tack +23/+5 °C	ASTM D 2979	7,2/13 N	1.6/2.9 lbf
Adhesion of class C2E cementitious glue on TNT	EN 12004/EN 1348	0,9 N/mm ²	130.53 lbf/in ²
Resistance to temperature	-	-40/+120 °C	-40/+248 °F
Application temperature ⁽¹⁾	-	+0/+45 °C	+32/113 °F
Storage temperature ⁽²⁾	-	+0/+50 °C	+32/+122 °F
Exposure to weather	-	4 weeks	-
French VOC classification	ISO 16000	A+	-
VOC emissions	EN 16516	very low	-

⁽¹⁾ On dry support and at a temperature > 0 °C. The absence of condensation or frost on the surface must be guaranteed.

⁽²⁾ Store the product in a cool, dry place for no more than 12 months. It is recommended to store the product at room temperature until application, as it is sensitive to temperature changes. We recommend applying it during the cooler hours in summer and the warmer hours in winter, possibly with the help of a hot air gun.

(*) For full details and tested configurations, please refer to the manual or contact our technical department.

♻️ Waste classification (2014/955/EU): 08 04 10.



LOW TEMPERATURE



CAN BE PLASTERED




DURABILITY



BUTYL BASED



CODES AND DIMENSIONS


CODE	liner [mm]	B [mm]	s [mm]	L [m]	liner [in]	B [in]	s [mil]	L [ft]	
MANPLA2080	20/80	100	1	10	0.8/3.2	3.9	39	33	6
MANPLA20180	20/180	200	1	10	0.8/7.1	7.9	39	33	2
PROTECT330	-	330	1	10	-	13.0	39	33	2
PROTECT500	-	500	1	10	-	19.7	39	33	1

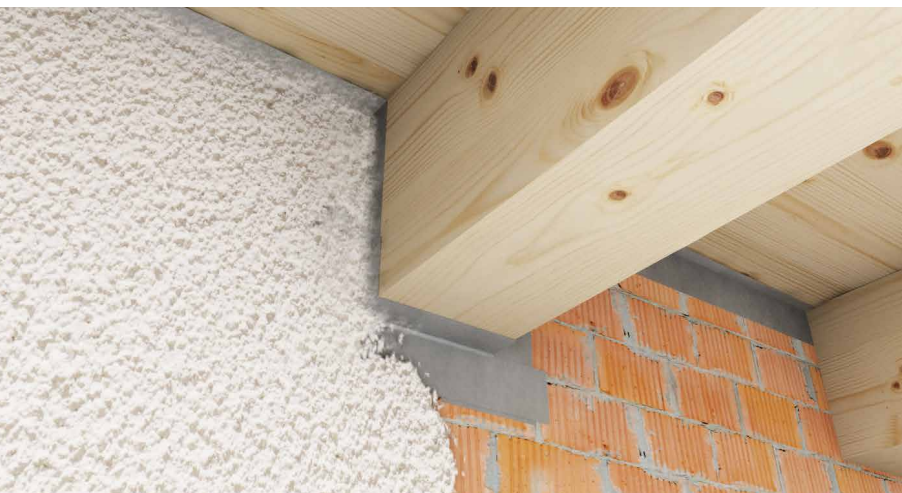
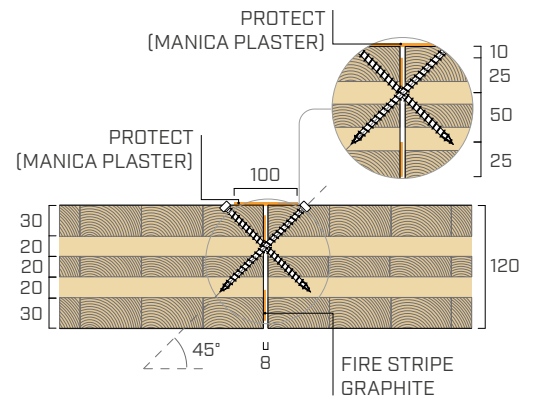
FIELDS OF APPLICATION



FIRE TIGHTNESS AND INSULATION

Tests carried out at the CSI laboratory in accordance with EN 1363-4 enabled characterisation of the fire behaviour of several CLT joints sealed with Rothblaas products.

TIGHTNESS (E)	Cotton swab	> 96 minutes	
	Persistent flame		
INSULATION (I)	Time	> 96 minutes	EI 90



ADHESION AND DURABILITY

The special butyl mix ensures high adhesion even at low temperatures. Durable and thermally stable.

CAN BE PLASTERED

The non-woven polypropylene fabric means the support can be plastered, offering greater versatility of use.