

JIG REUSE

INSPECTION JIG FOR VGS PLATE

RELIABLE AND OBJECTIVE INSPECTION

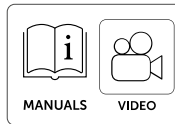
Standardised inspection of the reusability of VGS PLATE screws reduces assessment errors and enhances overall safety.

REDUCED RISKS AND LIABILITIES

Inspection is mandatory, yet straightforward to perform. Following an initial visual check, the use of the jig enables reliable and objective identification of critical defects in the screws, such as deformation, thread wear or excessive use over time.

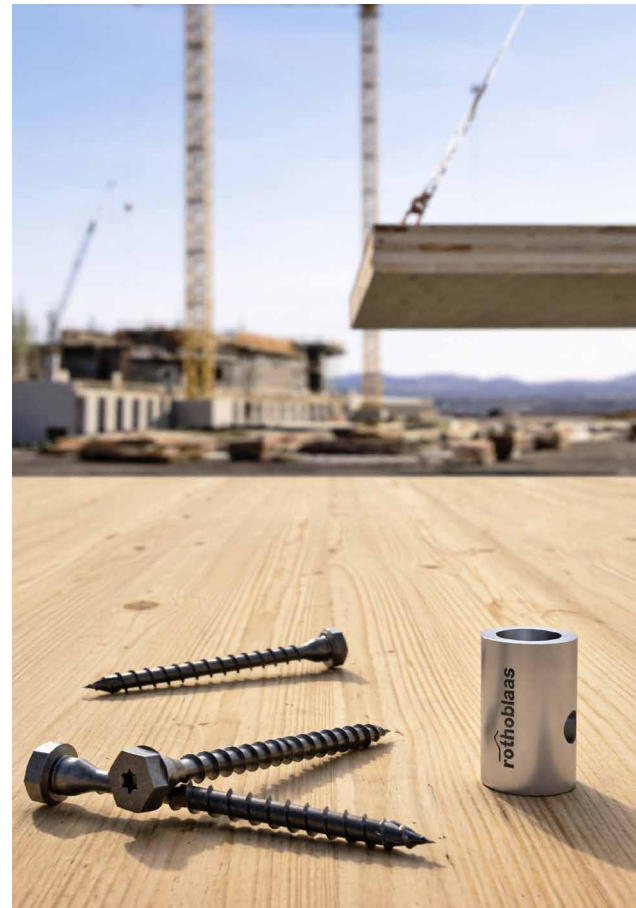
FAST AND COST-EFFECTIVE DECISION-MAKING

On-site assessment of suitability or non-suitability reduces inspection time and avoids unnecessary costs associated with replacing screws that are still fit for use.



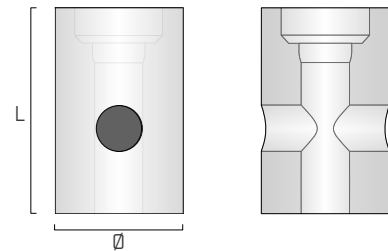
CODES AND DIMENSIONS

CODE	L [mm]	Ø [mm]	screw	pcs
JIGREVGSP11	48	30	VGSPL Ø11	1



VIDEO

Scan the QR Code and watch the video on our YouTube channel



MATERIAL

The jig is manufactured from high-hardness, wear-resistant steel to ensure inspection accuracy and long service life, even under intensive use conditions.

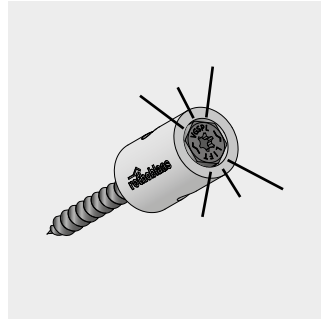
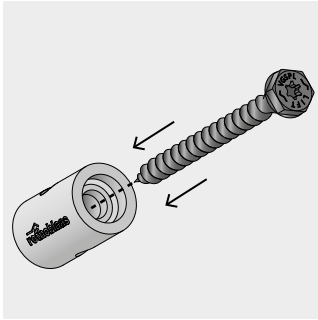
CONTROLLED REUSABILITY

The reusability of the VGS PLATE screw for lifting timber elements is verified through specific analyses and testing. The jig enables objective inspection of the screw and is essential for assessing its suitability for reuse.

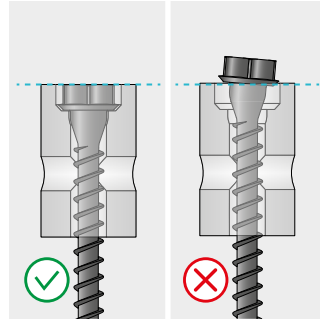
INSPECTIONS WITH JIG REUSE

Reuse is permitted only if the screw passes all inspection checks. Otherwise, it must be properly discarded. The inspection process includes a preliminary visual check followed by verification using the JIG REUSE jig.

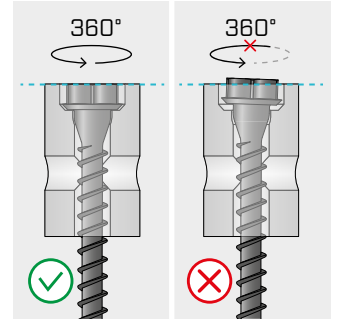
STRAIGHTNESS (ABSENCE OF PLASTIC DEFORMATION)



Insert the VGS PLATE into the main bore of the JIG REUSE jig until the head sits firmly against the jig.

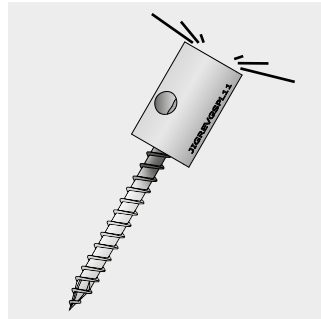
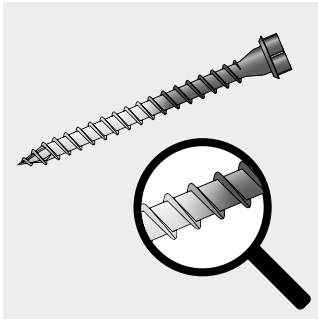


The screw head must be fully seated within the jig.

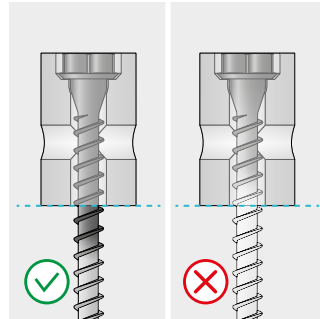


When inserted in the jig, the screw must rotate freely while the head remains fully seated.

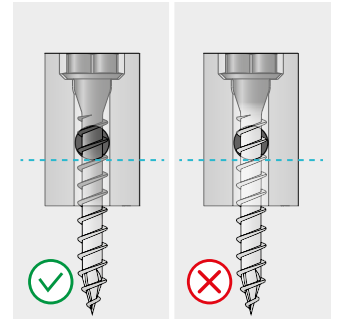
NUMBER OF USES



Identify the coating transition zone (wear area) on the VGS PLATE. Carry out this check with the jig and the VGS PLATE in exactly the same position as in the previous inspection.

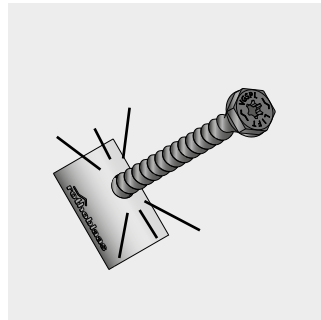
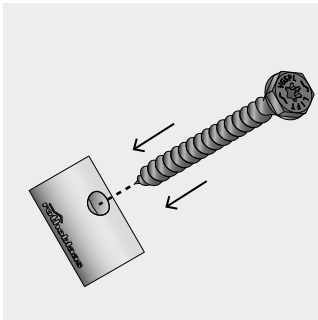


The wear area must remain completely outside the body of the JIG REUSE.

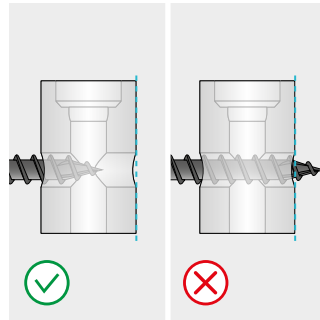


For screws with $L \leq 80$ mm, the wear area must be located below the side bore of the JIG REUSE.

THREAD WEAR

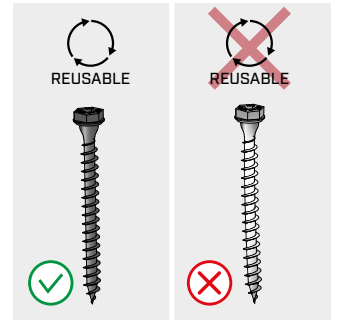


Insert the VGS PLATE into the side bore of the JIG REUSE as deeply as possible.



The tip of the screw must not protrude from the jig.

DISPOSAL



If the screw fails to meet any of the specified criteria, it must be discarded.



CAUTION: use of the JIG REUSE jig alone is not sufficient to verify the reusability of the VGS PLATE lifting screw. For a complete assessment, refer to the document "VGS PLATE + JIG REUSE".

VGSPL + JIG REUSE INSTRUCTIONS AND CRITERIA FOR REUSE IN LIFTING SYSTEMS

The full installation instructions and the reuse guidelines are available at www.rothoblaas.com

