

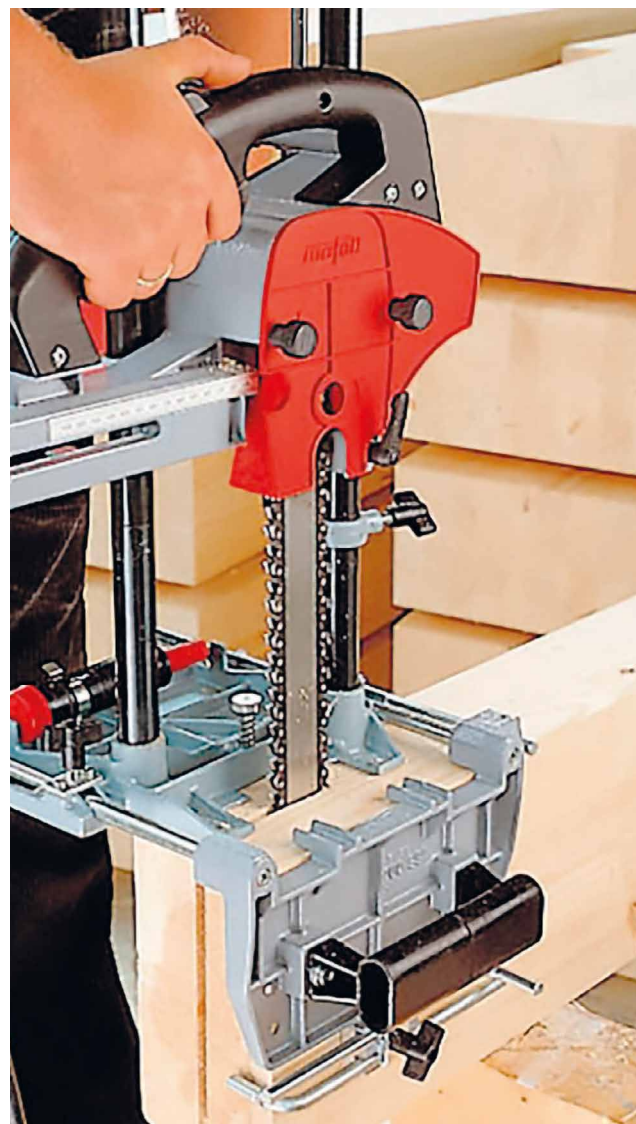
# SG 230

## DEVICE FOR MILLED CHAIN

- Vertical notch depth: **230 mm | 9 1/16"**
- Horizontal notch depth: **285 mm | 11 1/4"**
- Notch width per pass: **6 - 21 mm | 1/4" - 13/16"**
- Notch length per pass: **50 mm | 2"**
- Weight: **8,7 kg | 19.2 lbs**



1



### CODES AND DIMENSIONS

CODE	description	pcs
1 MA200990	SG230 chain slot mortising device without mortiser	1

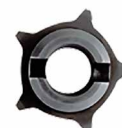
### ACCESSORIES FOR ALUMIDI AND ALUMAXI



1



2



3

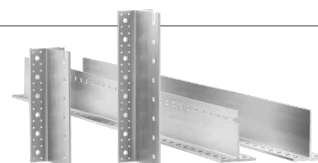
CODE	description		pcs
1 MA091383	chain bar for mortising width 6-7 mm   0.236 - 0.276 in	ALUMIDI	1
2 MA091378	chain for mortising width 7 mm   0.276 in	ALUMIDI	1
3 MA091686	chain pinion for mortising width 6-7 mm   0.236 - 0.276 in	ALUMIDI	1
1 MA091382	chain bar for mortising width 10-11 mm   0.394 - 0.433 in	ALUMAXI	1
2 MA091376	chain for mortising width 11 mm 0.433 in	ALUMAXI	1
3 MA091688	chain pinion for mortising width 10-11 mm   0.394 - 0.433 in	ALUMAXI	1

The LS 103 chain mortiser and relative accessories must be ordered separately.

**ALUMIDI**  
CONCEALED BRACKET  
WITH AND WITHOUT  
HOLES



**ALUMAXI**  
CONCEALED BRACKET  
WITH AND WITHOUT  
HOLES



For more information, see the "PLATES AND CONNECTORS FOR TIMBER" catalogue, available in the "Catalogues" section of the website [www.rothoblaas.com](http://www.rothoblaas.com).