

CONTAINER

PORTABLE STORAGE FOR THE WORKSITE

PRACTICAL

Protects tools and construction materials, and safeguards machines, keeping them secure and dry.

ORGANISED

The shelving (optional) allows tools and products to be stored neatly, in an easily accessible manner.

RENTABLE

The container can also be rented on a monthly basis.



CHARACTERISTICS

SIZES	up to 2,44 x 2,20 x 2,26 m 8' x 7' 3" x 7' 5"
CAPACITY	450-630 kg 990 - 1390 lbs
OPTIONAL EQUIPMENT	electrical system, shelving unit, tilting table
VERSIONS	purchasable / rentable



MATERIAL

The outer structure is made of sturdy sheet metal. The hinged door is fitted with galvanized locking rods. The floor consists of a 21 mm plywood panel. The container comes complete with angle brackets and a forced ventilation system. It features two forklift slots spaced 900 mm apart.

FIELDS OF USE

It can be used as a storage unit for materials or as an on-site staff room.



DIMENSIONS

Standard dimensions perfect for transport.

ACCESSORIES

Available in two sizes; it can also be fitted with an electrical system and shelving.

LC6

SMALL CONTAINER WITHOUT ELECTRICAL SYSTEM

CODES AND DIMENSIONS

CODE	B	L	H	B	L	H	empty weight		payload	
	[m]	[m]	[m]	[ft]	[ft]	[ft]	[kg]	[lbs]	[kg]	[lbs]
RENTCONT6(*)	1,97	1,98	1,91	6' 5"	6' 6"	6' 3"	450	990	2000	4400
RBCONT6	1,97	1,98	1,91	6' 5"	6' 6"	6' 3"	450	990	2000	4400

(*) Rentable.



LC8

LARGE CONTAINER WITHOUT ELECTRICAL SYSTEM

CODES AND DIMENSIONS

CODE	B	L	H	B	L	H	empty weight		payload	
	[m]	[m]	[m]	[ft]	[ft]	[ft]	[kg]	[lbs]	[kg]	[lbs]
RENTCONT8(*)	2,20	2,44	2,25	7' 2"	8' 1/8"	7' 4"	630	1390	3500	7700
RBCONT8	2,20	2,44	2,25	7' 2"	8' 1/8"	7' 4"	630	1390	3500	7700

(*) Rentable.

LC8 L

LARGE CONTAINER WITH ELECTRICAL SYSTEM

CODES AND DIMENSIONS

CODE	B	L	H	B	L	H	empty weight		payload	
	[m]	[m]	[m]	[ft]	[ft]	[ft]	[kg]	[lbs]	[kg]	[lbs]
RENTCONT8L(*)	2,20	2,44	2,25	7' 2"	8' 1/8"	7' 4"	630	1390	3500	7700
RBCONT8L	2,20	2,44	2,25	7' 2"	8' 1/8"	7' 4"	630	1390	3500	7700

(*) Rentable.



Would you like to equip your container with shelving to better organise construction materials, especially screws?

Add the **SHELVA** shelving system to the 8-foot container. Each shelf fits one of the inner sides, allowing all materials to be neatly arranged.

See shelf details on page 16.

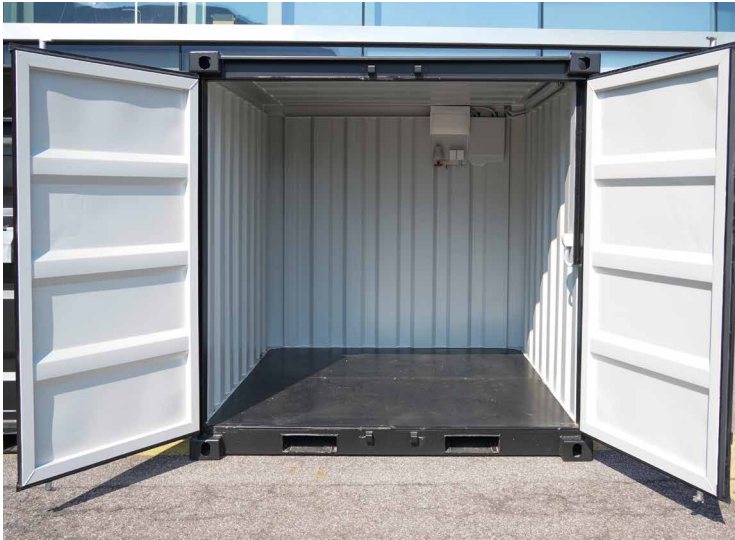
ELECTRICAL SYSTEM:

- Compliant with DIN VDE 400V/32A, CEE power supply
- A fuse box with RCD, 16A/10A fuses
- 1 linear LED light, 40W
- 1 Schuko double socket, 1x 32A socket
- 1 light switch next to the door

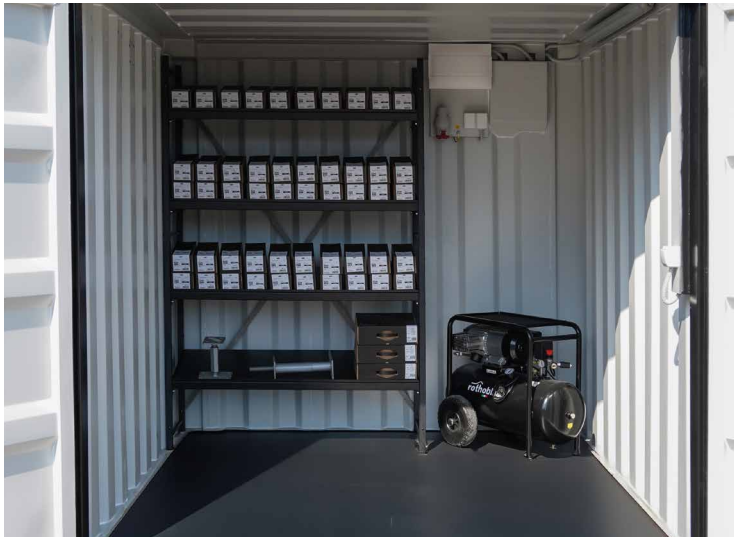
NOTES:

- The indicated dimensions refer to the external overall size
- Minimum rental period: 3 months
- Rent is invoiced every 6 months
- Transport cost is charged with the first and last invoice

CONTAINER LC6 + LC8 + LC8 L



SHELVA SHELVING COMBINED WITH LC8 + LC8 L CONTAINERS



ELECTRICAL SYSTEM FOR CONTAINER LC8 L

